

PO2021 与 KNX 系统集成

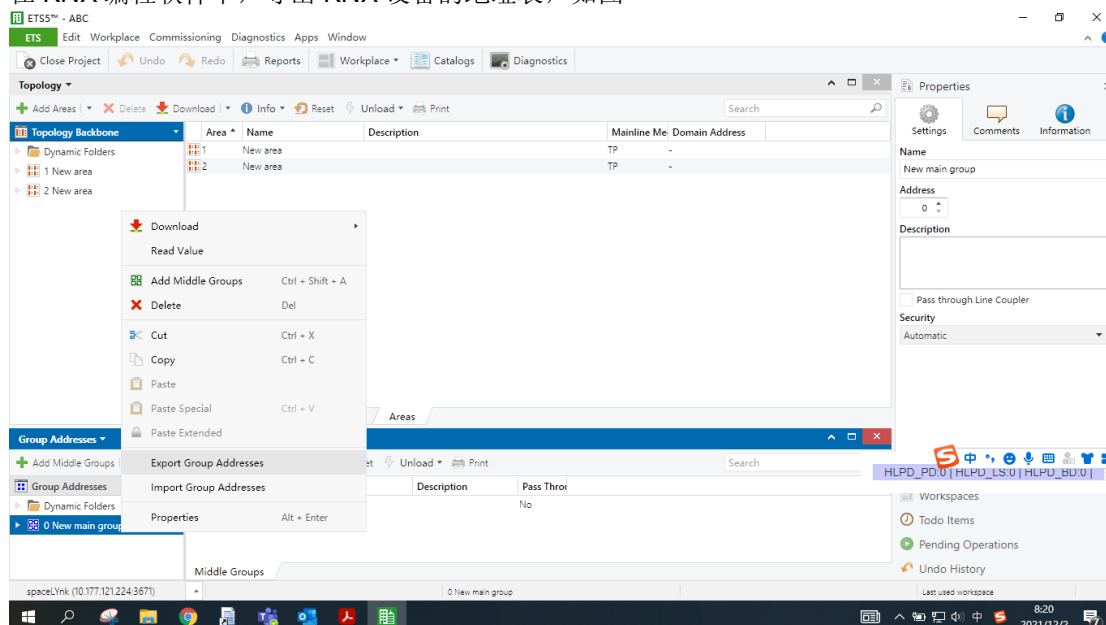
问题描述:

PO2021 如何与 KNX 系统集成

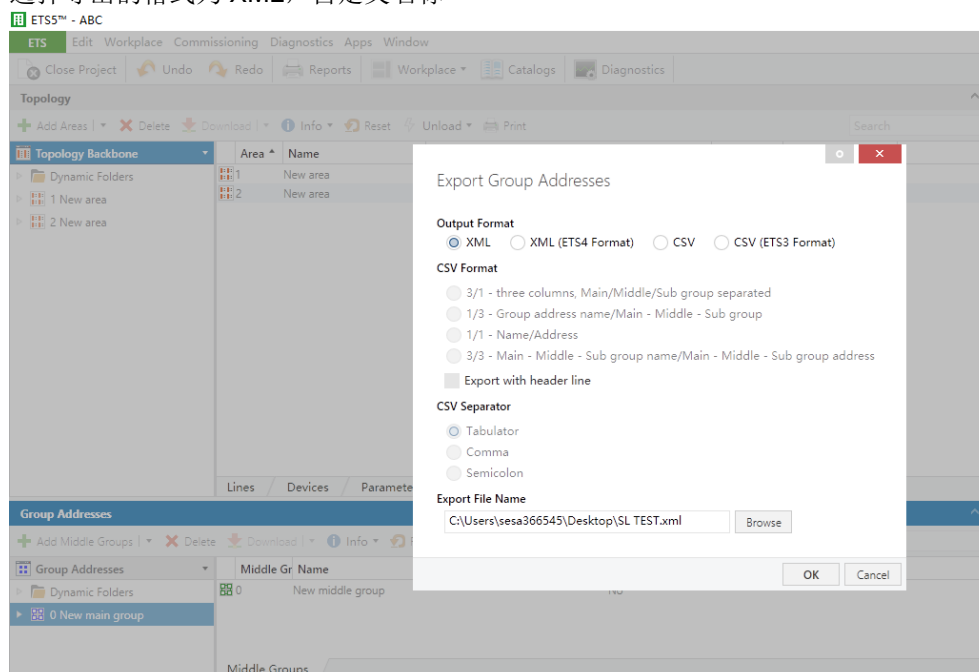
解决方案:

步骤如下:

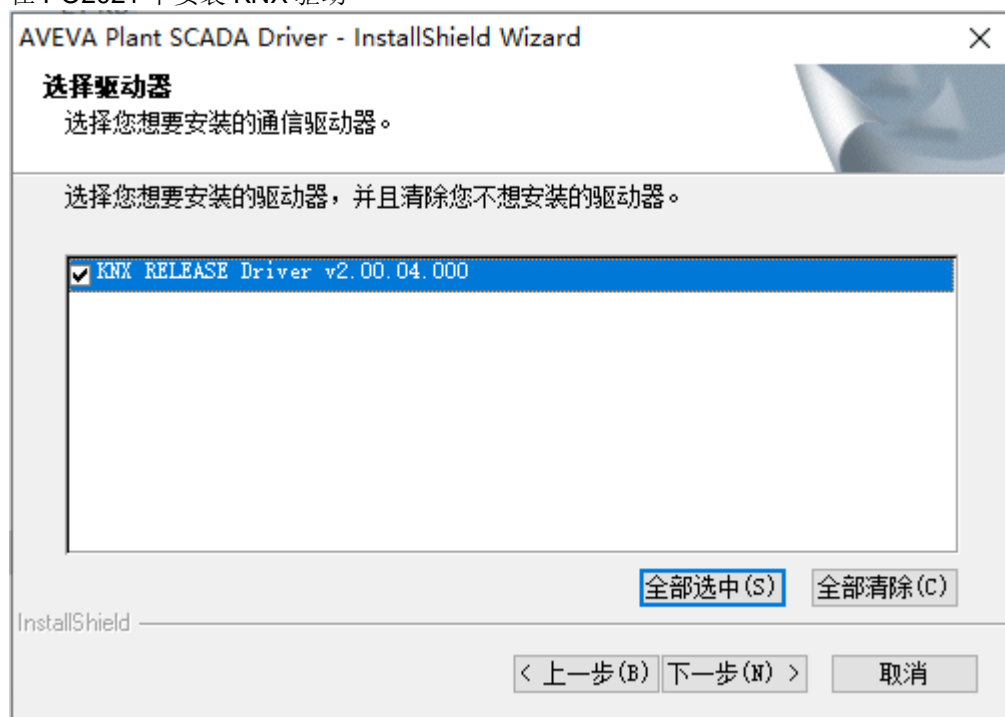
1、在 KNX 编程软件中，导出 KNX 设备的地址表，如图



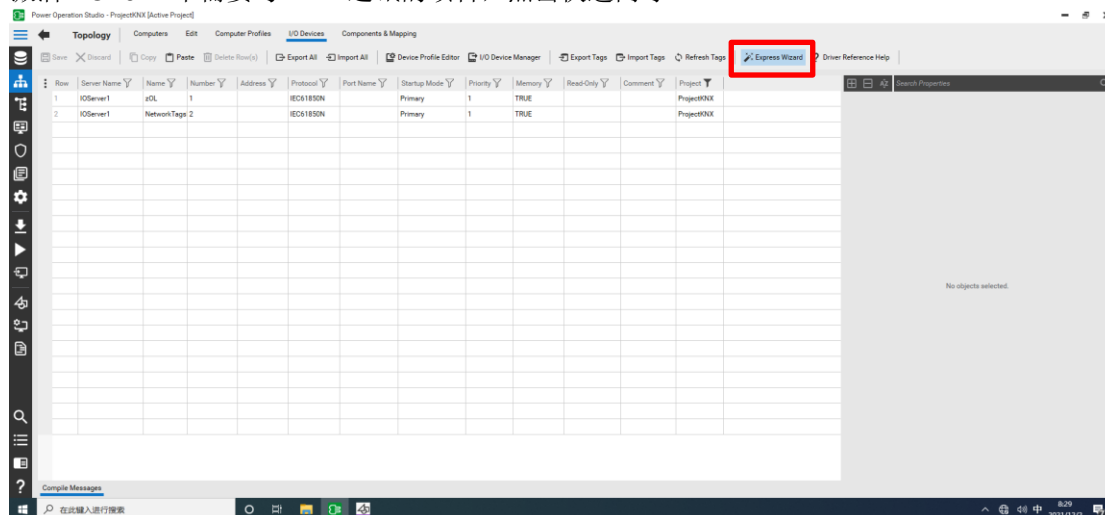
2、选择导出的格式为 XML，自定义名称



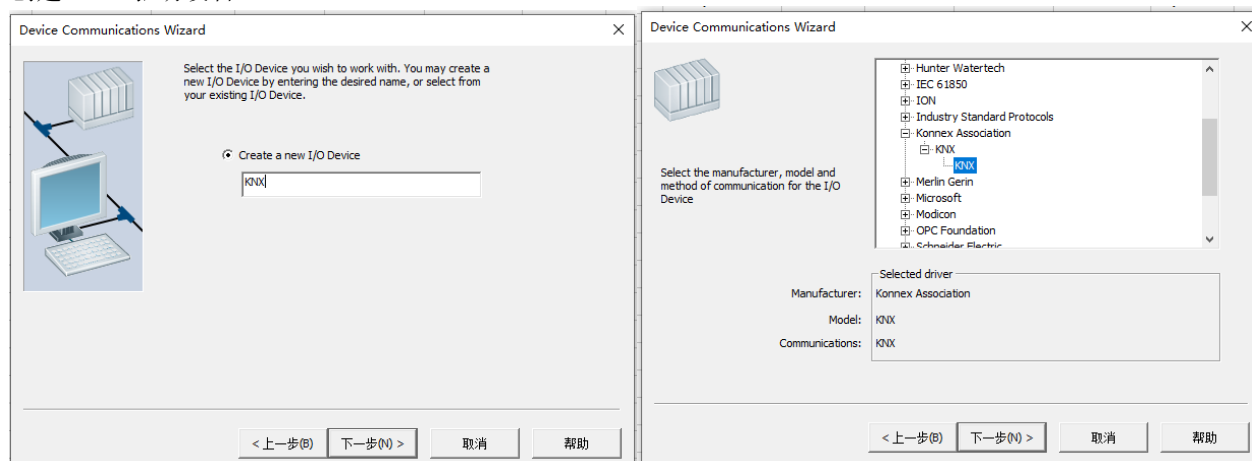
3、在 PO2021 中安装 KNX 驱动



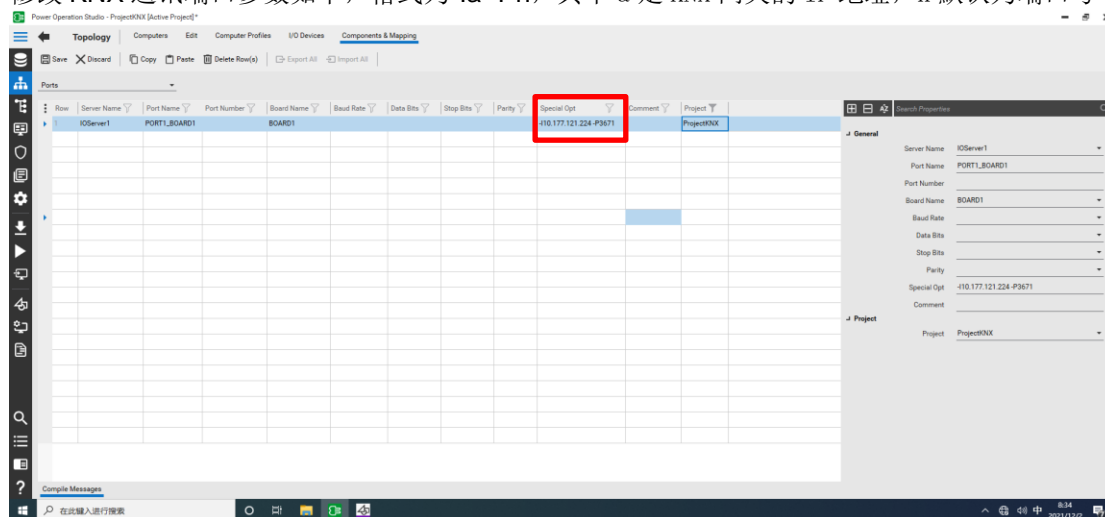
4、激活 PO2021 中需要与 KNX 通讯的项目，点击快速向导



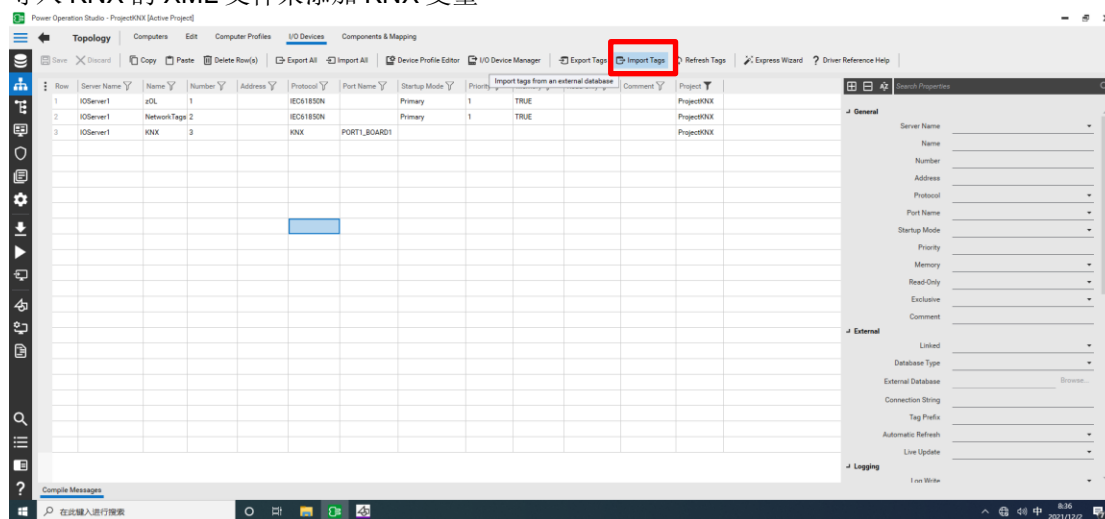
5、创建 KNX 驱动设备



6、修改 KNX 通讯端口参数如下，格式为-Ia -Pn，其中 a 是 KNX 网关的 IP 地址，n 默认为端口号 3671



7、导入 KNX 的 XML 文件来添加 KNX 变量



Power Operation Studio - ProjectKNX [Active Project]

Topology Computers Edit Computer Profiles I/O Devices Components & Mapping

Save Discard Copy Paste Delete Row(s) Export All Import All Device Profile Editor I/O Device Manager Export Tags Import Tags Refresh Tags Express Wizard Driver Reference Help

Row	Server Name	Name	Number	Address	Protocol	Port Name	Startup Mode	Priority	Memory	Read-Only	Comment	Project
1	IOServer1	zOL	1		IEC61850N		Primary	1	TRUE			ProjectKNX
2	IOServer1	NetworkTags	2		IEC61850N		Primary	1	TRUE			ProjectKNX
3	IOServer1	KNX	3		KNX	PORT1_BOARD1						ProjectKNX

Complex Messages

在此输入进行搜索

8:36 2021/12/2

Power Operation Studio - ProjectKNX [Active Project]

Topology Computers Edit Computer Profiles I/O Devices Components & Mapping

Save Discard Copy Paste Delete Row(s) Export All Import All Device Profile Editor I/O Device Manager Export Tags Import Tags Refresh Tags Express Wizard Driver Reference Help

Row	Server Name	Name	Number	Address	Protocol	Port Name	Startup Mode	Priority	Memory	Read-Only	Comment	Project
1	IOServer1	zOL	1		IEC61850N		Primary	1	TRUE			ProjectKNX
2	IOServer1	NetworkTags	2		IEC61850N		Primary	1	TRUE			ProjectKNX
3	IOServer1	KNX	3		KNX	PORT1_BOARD1						ProjectKNX

Complex Messages

在此输入进行搜索

8:37 2021/12/2

Import Variable Tags

Destination

I/O Device:

Source

Database type:

External database:

Connection string:

Options

☐ Add prefix to imported tags

Tag prefix:

☐ Delete all I/O Device tags prior to import

☐ Purge deleted tags not found in data source

8、导入成功后的变量如下：

Power Operation Studio - ProjectKNX [Active Project]

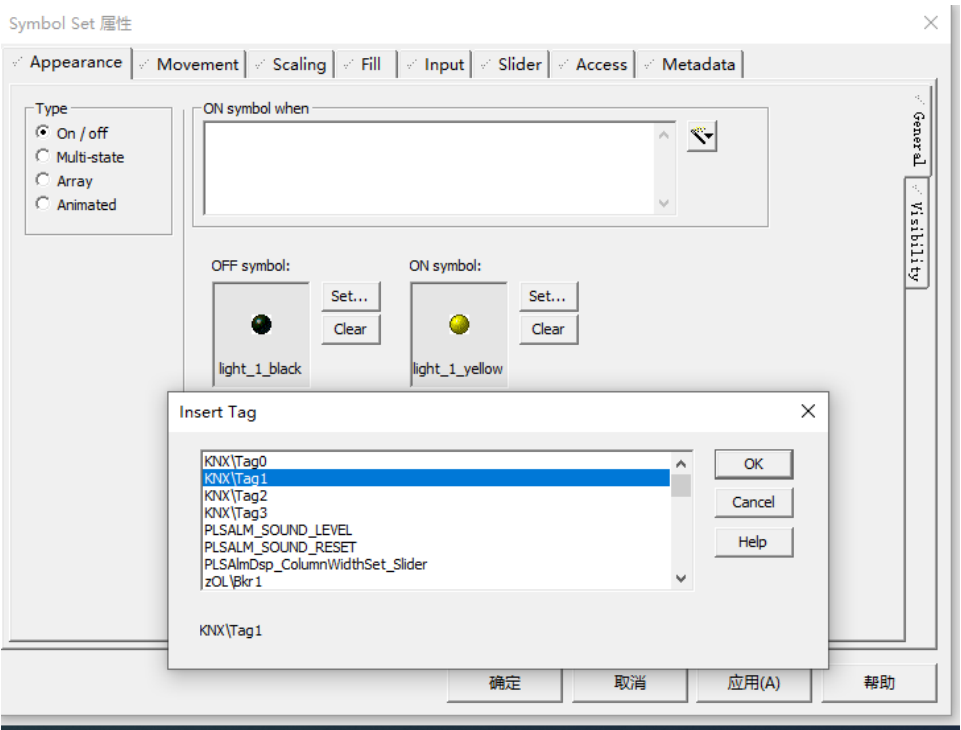
System Model | Equipment | Variables | Alarms | Trends | Accumulators | SPC

Save | Discard | Copy | Paste | Delete Row(s) | Export All | Import All | Refresh All Tags

Variables

Row	Equipment	Item Name	Tag Name	Cluster Name	I/O Device	Data Type	Address	Comment	Eng Zero Scale	Eng Full Scale	Project
1			KNX\Tag0		KNX	DIGITAL	0/0/1:1				ProjectKNX
2			KNX\Tag1		KNX	DIGITAL	0/0/2:1				ProjectKNX
3			KNX\Tag2		KNX	DIGITAL	0/0/3:1				ProjectKNX
4			KNX\Tag3		KNX	DIGITAL	0/0/4:1				ProjectKNX

9、在图形编辑器里创建测试点位



10、如果设置成功，可以在运行画面中控制及监视

